

# MONTHLY MEMBERSHIP PROGRESS REPORT

LOCATION PHILIPPINES

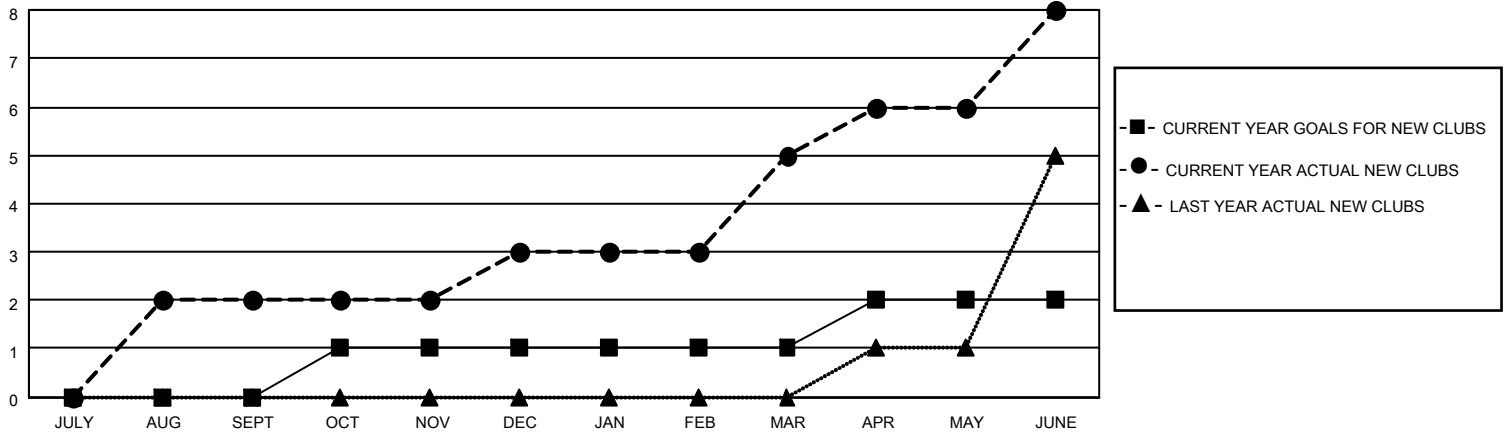
District 301 B1

Results as of: 6/30/2022

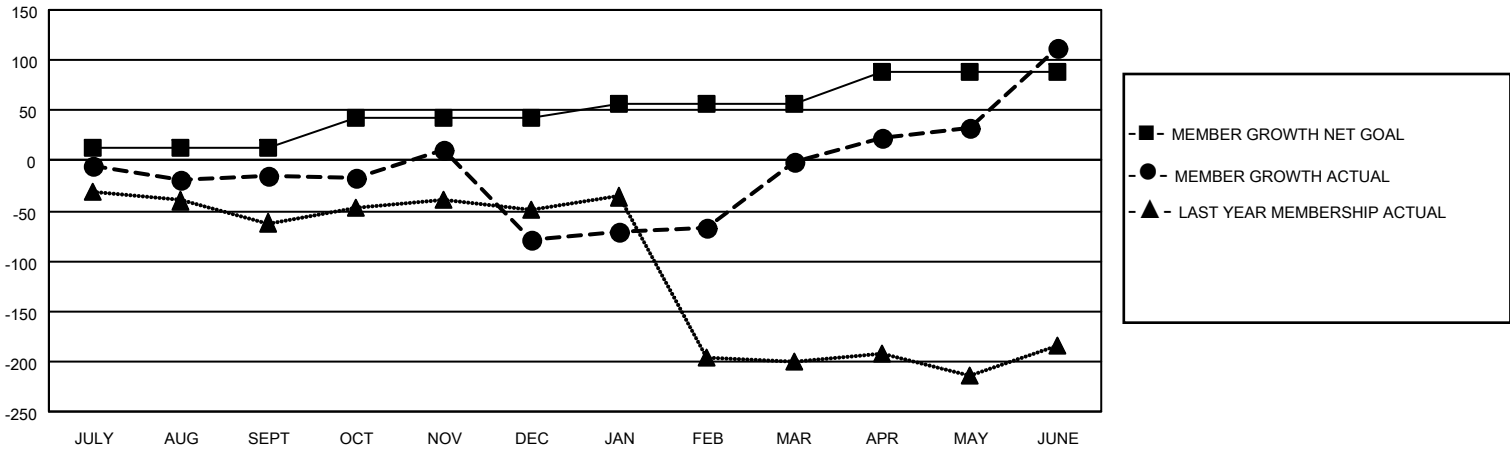
Clubs			
RESULTS FOR 2021-2022			
QUARTER	NEW CLUB GOAL	NEW CLUBS	DROPPED CLUBS
JULY/AUG/SEPT	0	2	2
OCT/NOV/DEC	1	1	5
JAN/FEB/MAR	0	2	0
APR/MAY/JUNE	1	3	2

Members			
RESULTS FOR 2021-2022			
QUARTER	MEMBER GROWTH NET GOAL	MEMBER GROWTH ACTUAL	DROPPED MEMBERS ACTUAL (including transfers)
JULY/AUG/SEPT	12	82	92
OCT/NOV/DEC	30	65	128
JAN/FEB/MAR	15	99	16
APR/MAY/JUNE	32	243	113

**GOALS AND ACTUAL NEW CLUBS CUMULATIVE**



**GOALS AND ACTUAL MEMBERS CUMULATIVE**



**DROPPED CLUBS: 9**

**35 CLUBS OF 50 ADDED 1 OR MORE NEW MEMBERS**

**GENDER DISTRIBUTION**

**DROPPED MEMBERS**

DECEASED	9
CLUB CANCELLED	167
OTHER	173
<b>TOTAL</b>	<b>349</b>

MALE	571 (44.96%)
FEMALE	699 (55.04%)
NON BINARY	0 (0.00%)
PREFER NOT TO ANSWER	0 (0.00%)

[CLICK HERE FOR CUMULATIVE MEMBERSHIP DATA](#)

TOTAL FAMILY UNIT MEMBERS	482
FAMILY MEMBERS PAYING HALF DUES	293